

TIA Selection Tool


Release Notes V2019.10

TIA Selection Tool

New Features and Product updates



Features

- Improved product selection for **SIPLUS HCS4200**
- Advanced catalog information () for **SIMATIC ET 200SP**, **SIMATIC ET 200MP** and **SIMATIC ET 200AL**
- Adaptation of filters for **power supplies**
- **Integrated drive dimensioning** (see following slides)

Product updates

- ...in the area of **Industrial Communication**



TIA Selection Tool

Features of the integrated drive dimensioning



Supported products

Motors:

SIMOGEAR 2KJ3 (Standard Asynchron)

SIMOGEAR 2KJ3 (Reluctance)

SIMOTICS S – 1FK2

SIMOTICS S – 1FL6

Inverter:

SINAMICS G120

SINAMICS G120D

SINAMICS G110M WM

SINAMICS G110D

SINAMICS G120X

SINAMICS S210

SINAMICS V90

SINAMICS V20

SINAMICS G120C

Appropriate suitable wire:

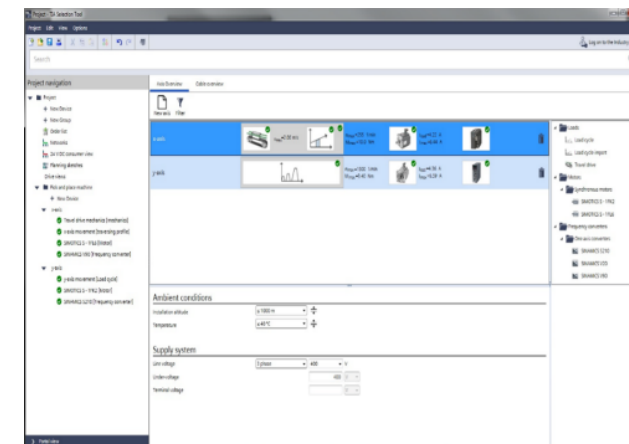
MOTION-CONNECT 300/500/800 power line, MOTION-CONNECT 300 brake line

MOTION-CONNECT 300 signal line

OCC- (One Cable Connection) MOTION-CONNECT 500/800

Component parts:

Harting, Knorrtec, Heine



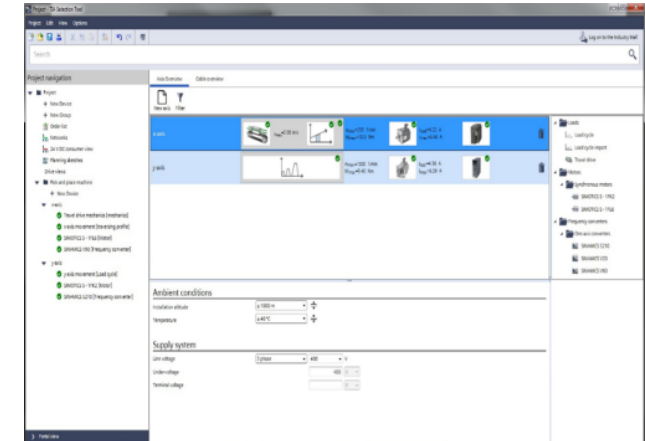
TIA Selection Tool

Features of the integrated drive dimensioning



New major functionalities

- The integrated drive dimensioning introduces significant parts of the **SIMOGEAR portfolio** with gearbox dimensioning and suitability checking functionality needed for **conveyor technology** in automotive applications.
- With the new **portfolio selection** dialog the integrated drive dimensioning guides the user to the right product portfolio. This can be done by setting technological choices separately for each axis.
- The integrated drive dimensioning provides now a bunch of new **mechanics** needed for proper handling of **conveyor technology** applications.



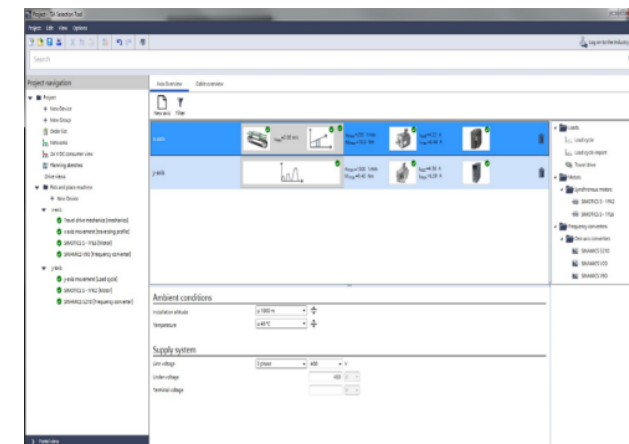
TIA Selection Tool

Features of the integrated drive dimensioning



New major functionalities

- The user can now dimension and configure **SIMOGEAR 2KJ3 motors**. Direct gearbox coupling with standard asynchronous and **reluctance motors** is supported. Additionally, an extended gear check is provided using the **HYDRA** interface.
- The complete configuration of all motors and frequency converters can be done offline, i.e. without calling the DTK.
- There are a lot of useful extensions for the project documentation available now.



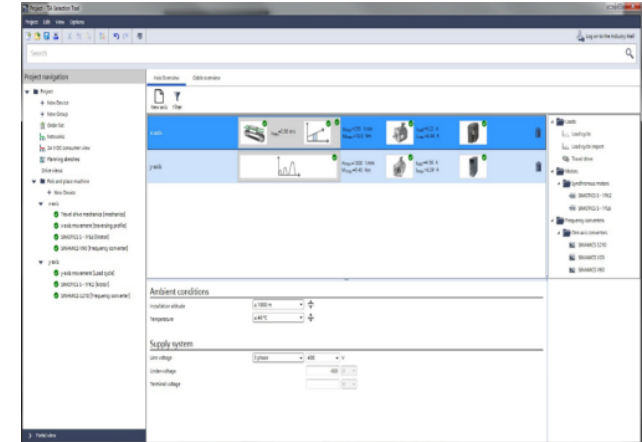
TIA Selection Tool

Features of the integrated drive dimensioning



Not supported

- Help system: There is no special help system provided.
- Brake resistor checking / dimensioning: There are no checks in the software provided, if the built-in braking resistor tolerates the generatoric energy of the application.
- No wire length check provided.



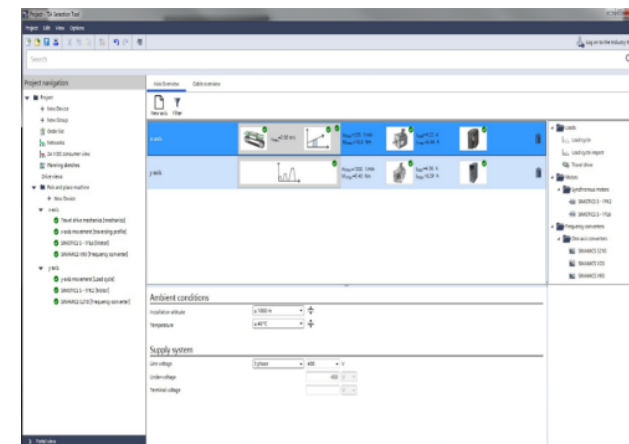
TIA Selection Tool

Features of the integrated drive dimensioning



Known issues

- After changing from portal to project view the content of the configuration view is not displayed anymore. Workaround: Switch between the views in order to force an update.
- Drag & Drop functionality is not supported properly in some places of the software.
- The bookmark navigation within the PDF printing does not work properly. In case please scroll within the document in order to access the right content.
- Installed Microsoft Visual Studio 2017 Runtime redistributable is needed. If you see an empty Screen, after creating a device with the integrated drive dimensioning, you are probably missing the redistributable files. The deploy contains a setup, where this package can be installed manually. Look under <Your TIA Selection Tool directory>\Plugins\SizerPlugin\vc_redist.x86



TIA Selection Tool

Features of the integrated drive dimensioning



Known issues

- Certificates cannot be selected via Portfolio Selection yet. The selection can be done with the dimensioning of the motor base type.
- For SIMOGEAR motors worm gearboxes are not available yet. This will be fixed with an upcoming data update.
- There are no article texts for secondary products in the order list yet.
- There are configurations where wires are not available in cable selection list.

